



# HRC 650 Headed Bars



The latest innovation from Headed Reinforcement Corp. allows simple field installation of High Performance reinforcement products.



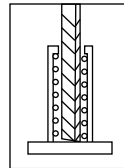
Caltrans project requiring mechanical anchorage to be installed onto existing reinforcement.



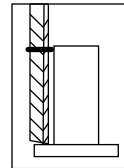
Ideal applications include pile anchorage.



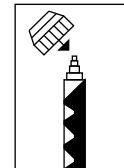
The epoxy-grouted connection consistently exceeds the actual stress and strain capacity of A706 rebar.



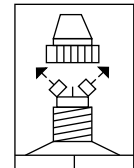
1. Fit coupler over existing rebar. Grind end and/or longitudinal ribs if necessary to insure fit.



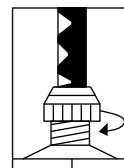
2. Hold coupler against rebar, with rebar end against the head, and mark the length of rebar which will be embedded with o-ring.



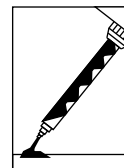
3. On the epoxy injector place retaining nut over mixing nozzle.



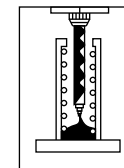
4. Be sure mixing elements are in mixing nozzle. Remove cap and D-shaped plugs.



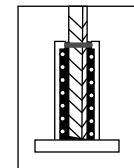
5. Place mixing nozzle and retaining nut over cartridge opening and tighten. Place cartridge into injection tool.



6. Discard a portion of adhesive until proper mixing is achieved. Blended epoxy should be consistent gray color. Do not use epoxy which is not blended.



7. Inject epoxy starting from bottom of coupler and slowly withdraw to avoid air pockets. Fill to 3/4 capacity of coupler.



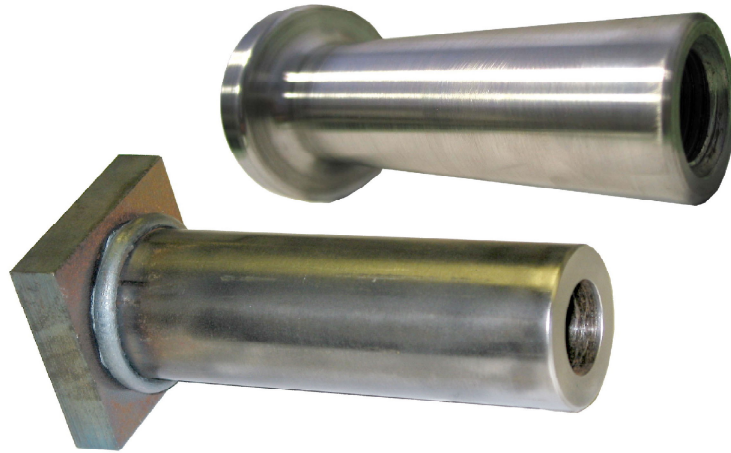
8. Slowly push coupler onto existing rebar so that the mark is at the end of the coupler thus insuring proper embedment.



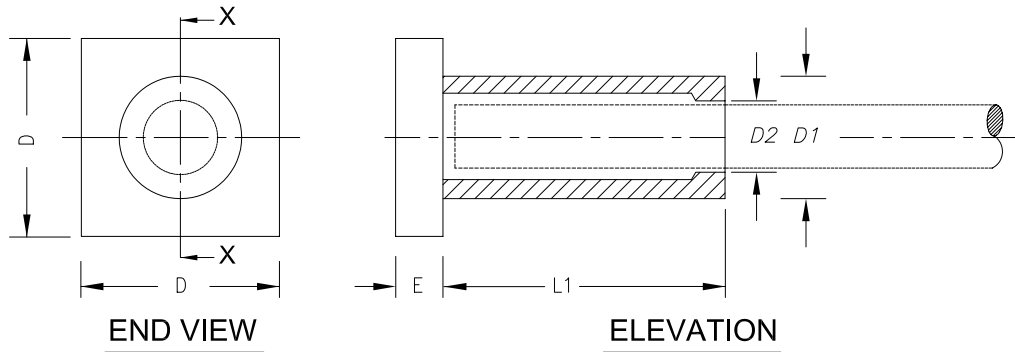
## HEADED REINFORCEMENT CORP.

11200 Condor Ave., Fountain Valley, CA. 92708, USA  
Tel: 714-557-1455 FAX: 714-557-4460 email: Sales@hrc-usa.com

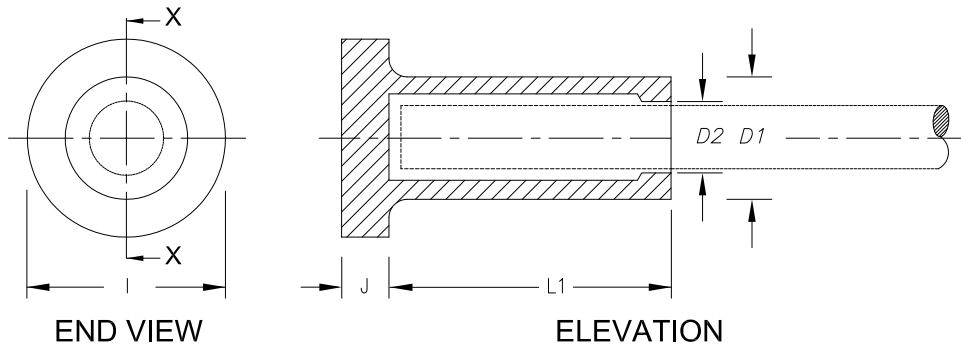
# HRC 652 & HRC 655 T-Heads



**HRC 652**



**HRC 655**



Note: Only to be used with HRC 601 or USP Structural Connectors CIA-Gel 7000

PATENT PENDING

BAR SIZE		D1		D2		L1		D		E		I		J	
		in	mm	in	mm	in	mm	in	mm	in	mm	in	mm	in	mm
#4	12M	1 1/8	29	5/8	16	3 1/2	89	2	51	1/2	13	1 3/4	44	0.40	10
#5	16M	1 1/4	32	3/4	19	3 3/4	95	2	51	1/2	13	2	51	0.50	13
#6	19M	1 1/2	38	7/8	22	4 3/4	121	2 1/4	57	5/8	16	2 3/8	60	0.56	14
#7	22M	1 3/4	44	1	25	5 3/4	146	2 1/2	64	5/8	16	2 3/4	70	0.63	16
#8	25M	2	51	1 1/8	28	6 1/2	165	3	76	3/4	19	3 1/4	83	0.63	16
#9	29M	2 1/4	57	1 3/8	35	7 1/4	184	3 1/4	83	3/4	19	3 1/2	89	0.69	18
#10	32M	2 5/8	67	1 9/16	40	8 1/2	216	3 1/2	89	7/8	22	4	102	0.75	19
#11	36M	2 3/4	70	1 25/32	45	9 1/4	235	4	102	1	25	4 1/2	114	0.88	22

SUBJECT TO CHANGE WITHOUT NOTICE

12/OCT/06



**HEADED REINFORCEMENT CORP.**

11200 Condor Avenue • Fountain Valley, CA 92708

Tel: (714) 557-1455 • Fax: (714) 557-4460